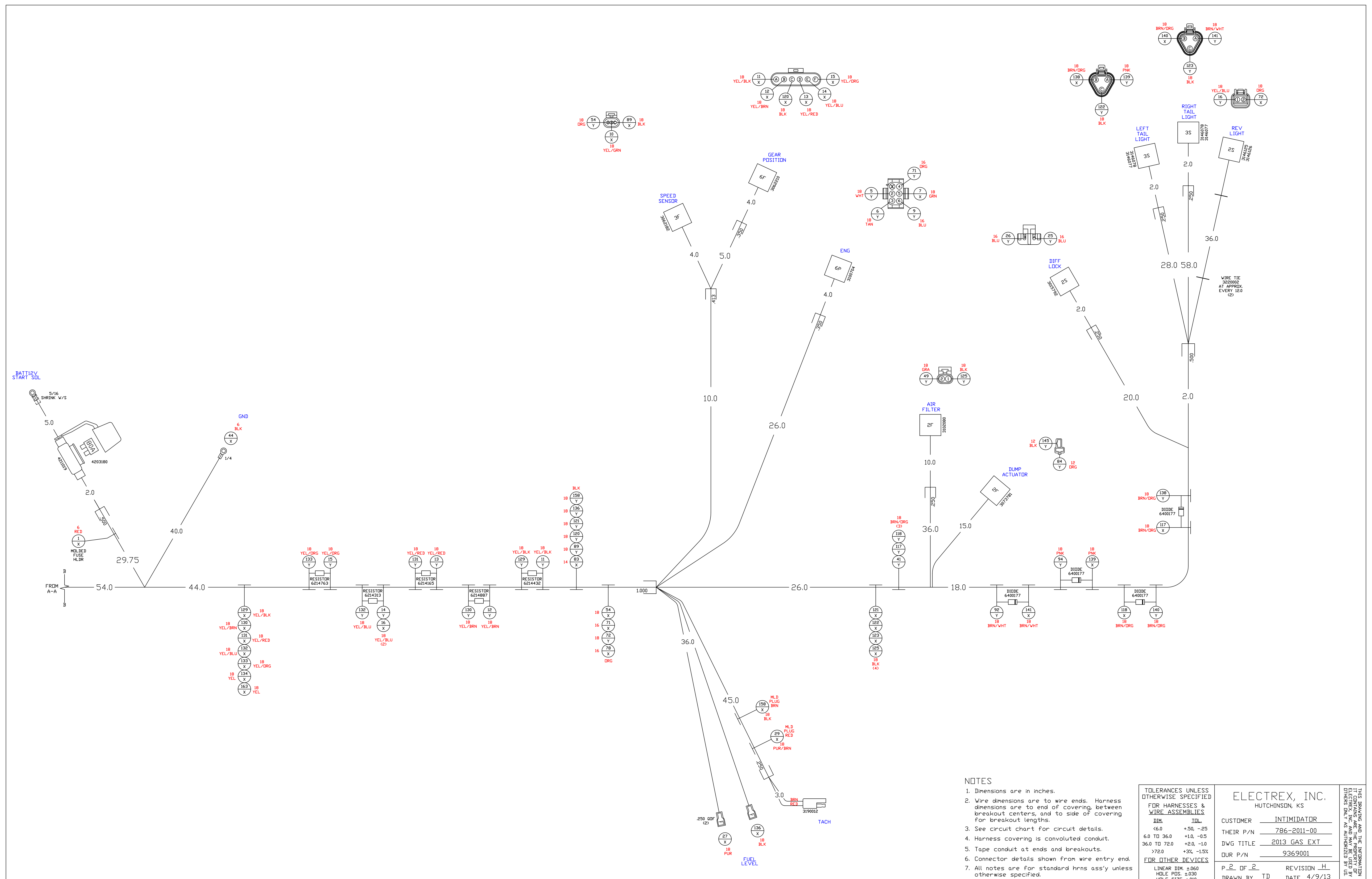


Designed By _____ Date _____
 Checked By _____ Date _____

- NOTES**
- Dimensions are in inches.
 - Wire dimensions are to wire ends. Harness dimensions are to end of covering, between breakout centers, and to side of covering for breakout lengths.
 - See circuit chart for circuit details.
 - Harness covering is convoluted conduit.
 - Tape conduit at ends and breakouts.
 - Connector details shown from wire entry end.
 - All notes are for standard hrns ass'y unless otherwise specified.

TOLERANCES UNLESS OTHERWISE SPECIFIED FOR HARNESSSES & WIRE ASSEMBLIES		ELECTREX, INC. HUTCHINSON, KS	
DIM.	TOL.	CUSTOMER	INTIMIDATOR
6.0 TO 36.0	+5.0 -25	THEIR P/N	786-2011-00
36.0 TO 72.0	+1.0 -0.5	DWG TITLE	2013 GAS EXT
>72.0	+2.0 -1.0	OUR P/N	9369001
FOR OTHER DEVICES		P 1 OF 2	REVISION H
LINEAR DIM. ±0.00	HOLE POS. ±0.00	DRAWN BY	TD
	HOLE SIZE ±0.01	DATE	4/9/13

THIS DRAWING AND THE INFORMATION IT CONTAINS ARE THE PROPERTY OF ELECTREX, INC. AND ARE NOT TO BE REPRODUCED OR TRANSMITTED IN ANY FORM OR BY ANY MEANS, ELECTRONIC OR MECHANICAL, WITHOUT THE WRITTEN PERMISSION OF ELECTREX, INC.



NOTES

1. Dimensions are in inches.
2. Wire dimensions are to wire ends. Harness dimensions are to end of covering, between breakout centers, and to side of covering for breakout lengths.
3. See circuit chart for circuit details.
4. Harness covering is convoluted conduit.
5. Tape conduit at ends and breakouts.
6. Connector details shown from wire entry end.
7. All notes are for standard hrns ass'y unless otherwise specified.

TOLERANCES UNLESS OTHERWISE SPECIFIED FOR HARNESSSES & WIRE ASSEMBLIES		ELECTREX, INC. HUTCHINSON, KS	
DIM.	TOL.	CUSTOMER	INTIMIDATOR
<6.0	+5.0, -2.5	THEIR P/N	786-2011-00
6.0 TO 36.0	+1.0, -0.5	DWG TITLE	2013 GAS EXT
36.0 TO 72.0	+2.0, -1.0	OUR P/N	9369001
>72.0	+3%, -1.5%		
FOR OTHER DEVICES		P 2 OF 2	REVISION H
LINEAR DIM. ±.050	HOLE POS. ±.030	DRAWN BY	TD
HOLE SIZE +.010		DATE	4/9/13

THIS DRAWING AND THE INFORMATION IT CONTAINS ARE THE PROPERTY OF ELECTREX, INC. AND ARE NOT TO BE REPRODUCED OR TRANSMITTED IN ANY FORM OR BY ANY MEANS, ELECTRONIC OR MECHANICAL, WITHOUT PERMISSION IN WRITING BY ELECTREX, INC.